



RELAYS & CONTACTORS

FUNCTIONAL DEVICES LONWORKS RELAY IN A BOX

RIBTW SERIES

DESCRIPTION

The **RIBTW Series** of general-purpose power relays from Functional Devices are controlled from a remote location using a LONWorks network. The relay is powered locally and communication with the network is over a twisted pair of wires. Using standard network variables (SNVTs) the relay can be commanded on and off over the network and the relay state is communicated. A separate digital input is provided to conveniently allow the state of a status feedback signal from a current switch (or other switched feedback device) to be communicated on the LONWorks network.

FEATURES

- Enclosed LonWorks relay with 20A contacts
- Additional dry contact input (powered by Class 2 circuit)
- Models with manual override switch
- LED indication of network status, relay status and service status
- UL listed and LonMark certified, CE

RIBTW2401B



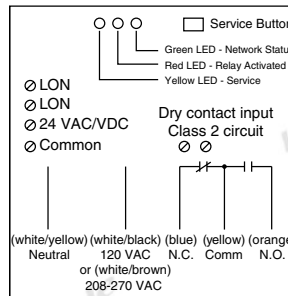
Functional Devices, Inc. **RIB**



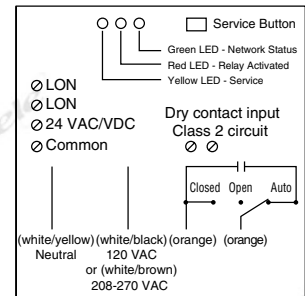
SPECIFICATIONS

Coil Rating	24 VAC @ 111 mA, 24 VDC @ 81 mA, 120 VAC @ 96 mA, 208-277 VAC @ 105 mA
Contact Rating	20 A resistive @ 277 VAC, 20 A ballast N.O. @ 120/277 VAC, 10 A ballast N.C. @ 120/277 VAC, 10 A tungsten N.O. @ 120 VAC, 1110 VA pilot duty @ 277 VAC, 770 VA pilot duty @ 120 VAC, 2 hp @ 277 VAC, 1 hp @ 120 VAC
Frequency	50/60 Hz
Relay Type	SPDT, SPST-NO
Duty	Continuous
Transceiver Type	FTT-10A
LED Indication	Green Network status Red Relay status Yellow Service status
Operating Temperature	-30° to 140°F (35° to 60°C)
Operating Humidity	5% to 95% non-condensing
Housing Type	NEMA 1, plenum rated
Conduit Hub	1/2" NPT
Dimensions	4"H x 4"W x 1.8"D (10.2 x 10.2 x 4.6 cm) with 1/2" NPT Nipple
Approvals	UL listed file #E68805, CE certified, LonMark 3.3 certified, FCC, ROHS
Weight	0.82 lb (0.38 Kg)
Warranty	1 year

WIRING



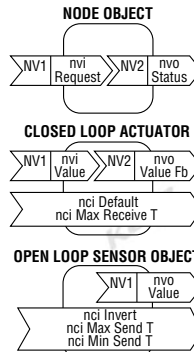
RIBTW2401B, RIBTW2402B



RIBTW2401SB, RIBTW2402SB

NOTE: When using 120, 200, or 277 VAC, there will be residual voltage on 24V terminals; this is not intended to power external devices.

APPLICATION



DESCRIPTION	SNVT NAME	SNVT TYPE
Command to open/close relay	nvi Value	SNVT_switch
Command status of relay	nvo Fb Value	SNVT_switch
Default state of relay on/off	nci Default	SNVT_switch
Communication timer	nci Max Receive T	SNVT_elapsed_tm
Invert status of Digital-In	nci Invert	SNVT_lev_disc
Max time between updates	nci Max Send T	SNVT_elapsed_tm
Min time between updates	nci Min Send T	SNVT_elapsed_tm

The relay will go to the default state when the communication timer times out. Setting the timer value to zero will cause the communication to never time out.

ORDERING INFORMATION

MODEL	DESCRIPTION
RIBTW2401B-LN	LonWorks RIB relay, SPDT, 24 VAC/VDC or 120 VAC power input
RIBTW2402B-LN	LonWorks RIB relay, SPDT, 24 VAC/VDC or 208-277 VAC power input
RIBTW2401SB-LN	LonWorks RIB relay, SPST-NO with manual override switch, 24 VAC/VDC or 120 VAC power input
RIBTW2402SB-LN	LonWorks RIB relay, SPST-NO with manual override switch, 24 VAC/VDC or 208-277 VAC power input